



14 Garden Street

Newbottle, Houghton Le Spring, DH4 4HF

TOTALLY AMAZING... this stone fronted two bedroom terrace home is perfection!!! The styled immaculate accommodation briefly comprises: Entrance door to lobby, spacious open plan living with lounge with focal feature fireplace, dining area and stunning fitted kitchen with appliances, stairs to the first floor landing provide access to two double bedrooms and a bathroom with white suite. Externally there is a small yard to the rear. Additional benefits include: Gas central heating, double glazing and a great location!

£115,000

14 Garden Street

Newbottle, Houghton Le Spring, DH4 4HF



- Two Bedroom Terrace Home
- Fitted Kitchen With Appliances
- DOUBLE BEDROOMS
- Stunning Home!!
- G/ch & Double Glazing
- Dining Area
- Rear Yard
- Spacious Lounge With Feature Fireplace
- Bathroom With White Suite
- Great Location

Entrance door to

Lobby

Lounge

Dining Area

Kitchen

Stairs To First Floor Landing

Bedroom One

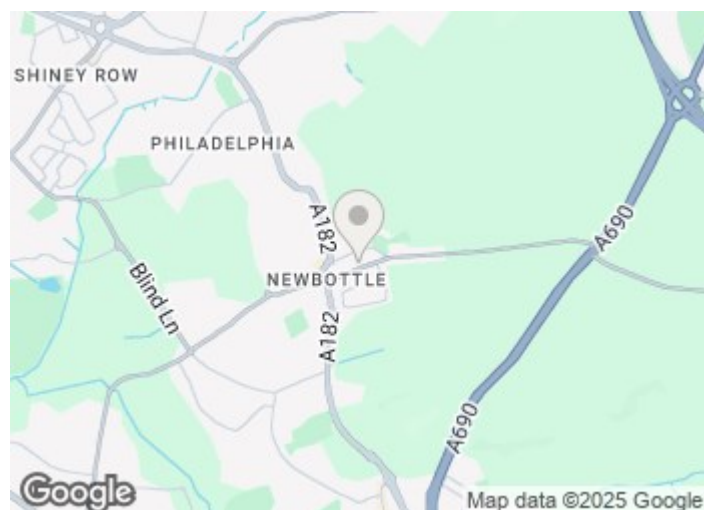
Bedroom Two

Bathroom

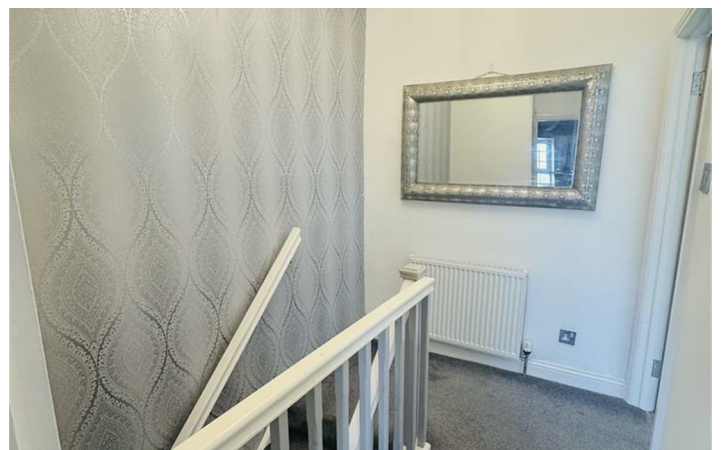
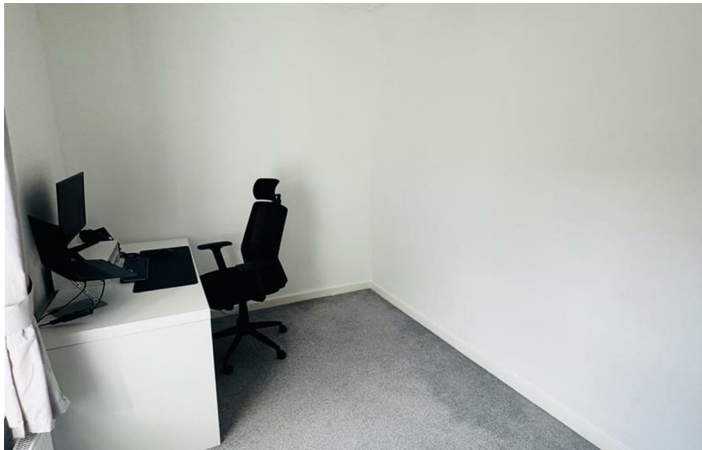
Externally

Please Note

MORTGAGE ADVICE



Directions





Floor Plan

These particulars, whilst believed to be accurate are set out as a general outline only for guidance and do not constitute any part of an offer or contract. Intending purchasers should not rely on them as statements of representation of fact, but must satisfy themselves by inspection or otherwise as to their accuracy. No person in this firms employment has the authority to make or give any representation or warranty in respect of the property.

Haroldville Gillas Lane East, Durham, DH5 8LB
Tel: 07783 825265 Email: hello@janinehegarty-bell.co.uk <https://www.janinehegarty-bell.co.uk/>

